

OPPOSE OVERCROWDING & ENVIRONMENTAL DEGRADATION FOR PROFIT!!



Send an email to

Troy.Leftwich@montgomeryplanning.org

CC: Amy.Lindsey@montgomeryplanning.org

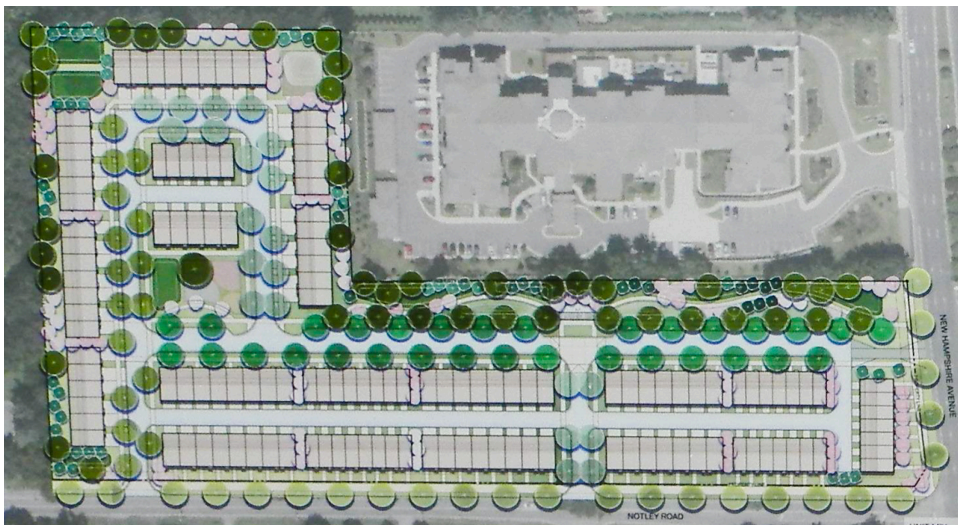
CC: notley.townhouses@gmail.comtoday!

Subject: OPPOSITION to F 20250680 Notley Rd townhouses in Colesville

Developers are planning to build 150 townhomes on less than 9 acres of land.

This development will cause more traffic congestion, overcrowding in local schools and shopping centers, deforestation, flooding, pollution, rise in cost of living, destruction of biodiversity, strained public services, etc.

Emailing does make a difference!



**Does this
look like
something
you'd want?**

